



The Mudpuppy

The official newsletter of the
Barony of Settmour Swamp

AS XLVIII – March 2015

Mudthaw

At Waterloo Village (see page 4)

Baroness and Baron Letter

Put on your best attire and come to Mudthaw to celebrate the Thawing of the Mud! The theme of the day is mud, and after this winter we fully expect we shall have some to share. We invite you to bring your arts, your prowess, and your bread-baking talents to the tournaments! This is the first time Mudthaw has been at a new site since our grandfathers era, so there is a lot of work to do. We could use your help, so offer a lending hand as our Kingdom comes to Settmour Swamp to proclaim that Spring has arrived.

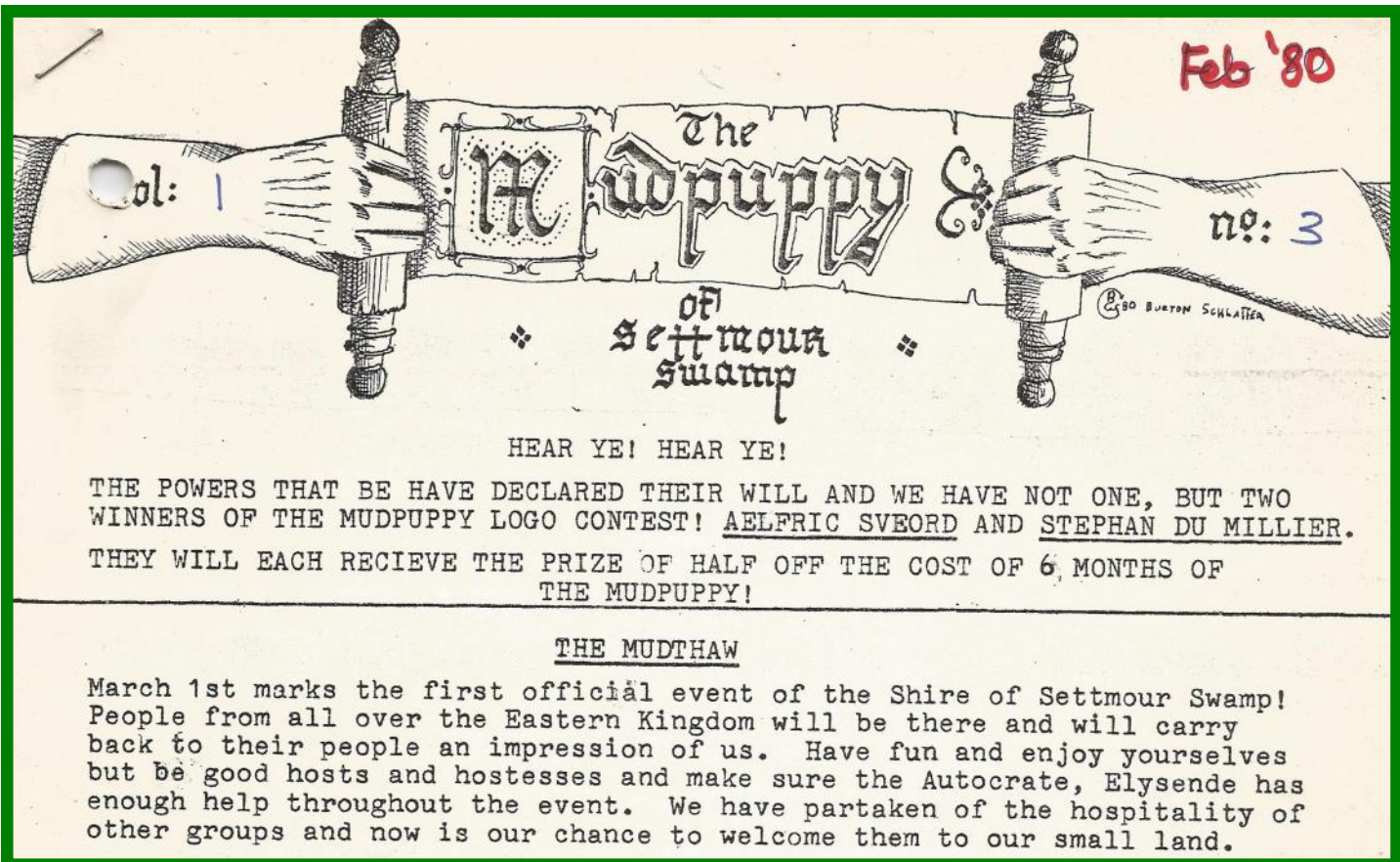
The Quest for Wit and Wisdom: Treasures of Timbuktu returns in May to the Clinton Elks. We look forward to spending several days and nights with you, as we choose our next Baronial Champions and take on the challenges of the thirty first Quest. Shop the merchants, enter the tournaments to vie to be Baronial Champions, learn a new art during the artisans row, enjoy a feast with friends, listen to the bardic circle by the fire, and of course conspire to solve the Quest itself.

DATE	EVENT	PAGE
March 10	Officer Meeting — Dr. Scott Berk's office (TUESDAY)	2
March 28	Mudthaw , Waterloo Village, Stanhope NJ	4
April 8	Officer Meeting — Merlinia, Maplewood NJ	-
May 22—25	Quest , Clinton Elks Lodge in Pittstown, NJ	10

Heavy Weapon, Rapier, A&S, Archery, Thrown Weapons & Dancing Practices, Page 22



Swamp History: First Mudthaw Announcement 1980



Announcement from our Seneschale, Charis:

Our March officers meeting, on Tuesday March 10th , will be held at the office of Dr. Scott Berk (Master Phillip). Contact Charis for directions. charisacci@comcast.net

The Glen Gardner site will not be available, until the end of March.

SCA Membership, New Website Online, Change your Password!

- 1) go to WWW.SCA.ORG
- 2) CLICK ON MEMBER SERVICES,
- 3) CLICK ON MANAGE YOUR MEMBERSHIP
- 4) log in with your member number and default password (first initial and last name, for example Jennifer O'Hara would use johara)

The system will send you a confirmation-email and prompt you to update your password.



Baroness and Baron Letter (continued)

Over the past few months we have borne witness to so many of you being recognized by the King and Queen, and know we are so appreciative of all the good works you have done for the Barony and the Kingdom. The Barony of Settmour Swamp is honored due to your work. Please carry on doing all that you do, and continue to make this Barony shine, and please let us know so we may recognize those works, or be present when recognition is to be bestowed.

We love being able to spend time with you at events, so join us as we attend the following events outside of the Barony as we support our Kingdom. Your Baroness will be attending the Black Rose Ball on March 14th, Carolingian Baronial Investiture on April 4th, and both your Baron and Baroness will be at Coronation on April 11th. Come join us!

Baroness Jehannine and Baron Erec



Chronicler Notes

The March issue of the Mudpuppy is devoted to **Mudthaw** (page 4). The announcement information is up to date as of 7PM on Monday March 9.

Also see page 10 for preliminary information for the upcoming **QUEST** event.

Also take the time to read "A Brief Discussion upon Rapiers" by Garrick Mapmaker on page 11 to 16.

Please note the announcement from our Seneschale Charis on the unavailability of the Glen

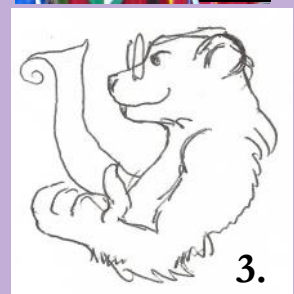
Gardner site during the month of March. (page 2)

Please contact me if you have ideas for an article.

If you have a new or old story of the Swamp to tell, please send it to me.

Thanks to Judith and Peter for encouragement, and excellent proofreading.

Baroness Ursula of North Woods,
[Chronicler](#)



Note: all artwork, photos and creative articles are used with permission. Each item is marked with a number. The numbers refer to the list of contributors which is shown on the last page of this issue.



Mudthaw

March 28th, 2015

Waterloo Village, Stanhope, NJ



Mudthaw Facebook Page: <https://www.facebook.com/events/688398337947074/?>

Mudthaw

Event date: March 28th, 2015

MUDTHAW IS AT A NEW LOCATION!

On this the feast of Saint Alkeld of Giggleswick, Their Excellencies Erec and Jehannine, Baron and Baroness of Settmour Swamp, invite the Known World to celebrate the Thawing of the Mud at our new location at Waterloo Village in Stanhope NJ.

Their Majesties will hold Curia at Mudthaw. It will start promptly at 10am, ending no later than 11:30am.

Please join us on 28 March for tournaments of martial skill in armored combat and fencing. We will also celebrate the arts and sciences with a grand display and competition, an artisans' row, and our traditional bread baking competition. There will be shopping with some of the finest merchants from around the known world. And to cap off the day, we will have a wonderful feast prepared by Lady Willa de la Mer.

The armored combat tournament will be fought in the traditional Mudthaw double elimination format. The tournament will begin promptly at noon. There will also be tournaments for fencing and youth fighting. The fencing tournament will begin at 12:00 PM, and the youth fighting tournament will start at 2:00pm.

Lady Alana of Carillion will be running children's activities, which will be available from 12pm to 3pm. Activities will be appropriate for children age 2-5. Additional volunteers are welcome (and needed!) At least one parent or guardian must be present at all times. Please contact Lady Alana for details - 732-277-9392, no calls before 10am or after 11pm.

For those needing local accommodations, we suggest either the Comfort Inn in Hackettstown (<http://bit.ly/1x928DW>) or the Holiday Inn in Budd Lake (<http://bit.ly/184Y69h>).

=====



Mudthaw (continued)

March 28th, 2015

For those inclined to the Arts and Sciences, we will be hosting a display and competition to show off finished products, run by Lady Marion Quyn. The theme of the competition will be MUD! Please note that state park regulations prohibit alcohol from being brought on site, which unfortunately will prevent brewing-related entries or demonstrations. Please contact Lady Marion at marion.quyn@gmail.com if you have any questions.

Mudthaw Arts and Sciences Competition:

This Competition is open to any and all who would enter. There will be a Competition Winner and a Populace Choice Winner. The site opens at 10:00 am and judging will begin at 1:00.

Rules

1. All entries must be mud-themed.
2. All entries must have been created within the past 2 years.
3. All culinary entries must include a full ingredient lists. Modern sanitary considerations must be taken in their preparation. Entrants are responsible for keeping cold food cold and hot food hot.
4. Research papers must be sent in prior to Mudthaw to allow for proper review. Please bring a hard copy for presentation amongst the other entrants. Send Research paper entries to Marion Quyn at marion.quyn@gmail.com by 1 March 2015 to ensure sufficient time for review.

Entries will be judged as follows:

Theme: Mud-related

Workmanship: construction, attention to detail, presentation;

Creativity: originality, interpretation;

Complexity: complexity of the design, difficulty, research and scope;

Authenticity: historical accuracy or interpretation;

Documentation: thoroughness, use and citation of historical sources, ideas demonstrated.

There will be an A&S Display space laid out for those not wishing to enter the competition but still desiring to display. Please pick up your entries and displays 1 hour before court.

Those interested in judging please contact Marion Quyn at marion.quyn@gmail.com. Judging sheets will be available on site.

We will also be holding an artisans row, run by Mistress Elizabeth Elenore Lovell. Please contact her if you are interested in participating at staceyrothrock@gmail.com or 732-207-9658 (calls between 10am and 7pm only please).



Mudthaw (continued)

March 28th, 2015

Those interested in participating in the annual Mudthaw bread baking competition should contact Lady Judith bas Rabbi Mendel (mcmendelsohn@optimum.net). All entries for the competition must include a full ingredient list and documentation. Judges will give preference to those entries which could have been made in period. This year's bread contest includes a new component: if you don't want to compete, but would like input on your bread, bring it and engage the judges in a discussion of your bread. We hope in this way to encourage more people to learn and perfect the art of bread-making.

Finally, Athena's Thimble will be holding a panel. For information please contact the Guild Mistress: Mistress Briony of Chatham
guildmistress@athenasthimble.com

=====

Please note that **no dayboard** will be provided at this event. We encourage you to provide your own food for the day, and we are arranging to have a food vendor on site.

As noted above, state park regulations **prohibit alcoholic beverages** from being brought on site; however, a **cash bar** serving beer and wine will be open from 1:00 PM until 8:00 PM.

NOTE: **Bears** are active in this area, so **no trash cans** or dumpsters are present. All attendees must take responsibility for **packing out their own trash**. Plastic bags will be distributed at Troll for this purpose. Finally, please note that Waterloo Village is a historical site at which archaeological research is actively taking place. Please be attentive and careful, especially during outdoor activities.

=====

Feast menu:

First Course:

Chickpea Puree - Hummus with ginger and cinnamon

Flatbread

Frutours - Beer battered apple slices

Chike Endored - Chicken breast baked in ginger, pepper and saffron coating served on skewers

Mushroom Tart with cheese and cloves in crust

Asparagus

Waterloo Village Facebook Page: <https://www.facebook.com/pages/Waterloo-Village/160311250763716?>



Mudthaw (continued)

March 28th, 2015

Second Course:

Mylates of Pork - pork with pine nuts and powder forte served in a double crust

Loseyns - Lasagna with muenster cheese and seasonings

Carrots

Crusty bread with spread

Pears Confyt - Pears poached in red wine and glazed

=====

Tentative Schedule:

10:00 Site opens

10:00 Curia – Pavilion

10:00 Merchants open – Meeting House

10:00 A&S Set-Up open – Pavilion

10:30 Armor inspections and authorization bouts

11:30 Youth fighting inspections and authorization bouts

12:00 Artisans' Row opens – Pavilion

12:00 Armored combat tournament begins

12:00 Rapier tournament

1:00 Arts and sciences

1:00 Bread Baking competition – Pavilion

1:00 Cash bar opens – Meeting House

2:00 (or immediately following rapier tournament)

Cut and thrust tournament

2:00 Youth fighting tournament begins

3:00 Artisans' Row closes – Pavilion

3:00 Marshal activities end

3:00 Accessibility hour – Meeting House

4:00 Troll closes

4:00 Baronial Court – Pavilion

4:30 Royal Court – Pavilion

5:00 Merchants close

7:00 Feast – Meeting House

8:00 Cash bar closes

9:00 Feast ends

9:30 Site closes (anyone staying afterwards, we thank you for helping to clean)

Site Opens: 10am

Site Closes: 9:30pm





Mudthaw (continued)

March 28th, 2015

=====
Event Location

*****NEW LOCATION*****

Waterloo Village
Waterloo Valley Rd
Stanhope, NJ 07874

Directions:

Take your best route to exit 25 on I-80 in New Jersey. Stay to the right as you come off the exit ramp, following signs to Waterloo Village. In 0.6 mi., turn left on Continental Drive. After one mile, turn left on Waterloo Rd. After 1.2 mi., turn left on Waterloo Valley Rd. Parking will be on your right. Alternatively, point your GPS to 40° 54' 52" N, 74° 45' 34" W.

Attendees are permitted to temporarily park vehicles at the event site (about 150 yards from the parking area), but they must be moved immediately after unloading. As noted above, archaeological research is actively taking place on the grounds, so attendees are asked to take care in approaching the site to unload.

=====
Site : Site fee:

Adult Members: \$10
Adult Non-Members: \$15
Minors (6-17): \$5
Minors (0-5): free
Merchants: \$20 (includes site fee for one person)
Feast: Feast will be \$9 per person in addition to the site fee.

Make Checks Payable to: SCA NJ Inc., Barony of Settmour Swamp, or register via ACCEPS at <http://acceps.ansteorra.org/index.php>

Feast: The feast is closed.

For questions about the menu or any special needs, please contact the head chef:

Lady Willa de la Mer
jessica.lynnemcc@gmail.com
845-544-4010 (leave message)

Make Checks Payable to: SCA NJ Inc, Barony of Settmour Swamp
=====



Mudthaw (continued)

March 28th, 2015

Contact Information

Event Steward:

Magister Galefridus Peregrinus
mka Loren D Mendelsohn
3 Morris Pl
Towaco NJ 07082
galefridus@optimum.net
(973) 214-4957 (no calls after 10pm)

Send Reservations to:

Lord Miles Boweman
c/o Michael Iurilli
806 Benner Street
Highland Park, NJ 08904
miles.boweman@gmail.com
908-307-8672 (no calls after 9pm)

ACCEPS credit card reservations are now available at: <http://acceps.ansteorra.org/index.php>

Other Contact Information:

Merchant Coordinator:
THL Þórlæifr hvítskegg
anteckd@aol.com
908-406-0143 (no calls after 9pm)



2.

Waterloo Village



2.



QUEST XXXI —preliminary plans underway May 22 to 25



Photo by Peotr and Otgon

Preliminary plans for **QUEST XXXI** (May 22 to 25) are underway. We will be at the Clinton Elks Lodge in Pittstown, NJ. **Lord Peotr** has written a fun and challenging Quest. The goal of questers is to find the “Treasures of Timbuktu”. **Baroness Merlinia** will serve as head cook, assisted by Lady Lydia and Magister Galefridus.

The Quest for the Treasures of Timbuktu

Search for the fabled treasure of the lost city of Timbuktu. Starting in the markets of Marrakesh, assemble all that you need to cross the fiery Sahara desert. Use your wit, courage, courtesy and bargaining skills to assemble your caravan (remember to get a camel). Next comes the trackless desert, with fierce nomad raiders and lonely oasis. With good fortune you will reach the city on the far side, what awaits there? Only the winners can tell us!

Quest for Wit and Wisdom XXXI

Event date: May 22nd, 2015 - May 25th, 2015

Hosted by Barony of Settmour Swamp - Pittstown, NJ

<http://www.eastkingdom.org/EventDetails.php?eid=2787>

A FaceBook group is also available for discussions and announcements.

<https://www.facebook.com/events/947686975250676/>

Baroness Ursula of North Woods
Event Steward for QUEST XXXI



A Brief Discussion upon Rapiers by Garrick Mapmaker

8.

A Brief Discussion upon Rapiers

This article is an adaption of one I originally published on line in 1996, on the web site of Don Danulf Donaldson, then my don. Many of the site links are now broken, and the graph is no longer visible, so I have elected to re-publish and update it slightly it here.

Introduction:

So you want to get a real reproduction rapier made. What do you tell the metal worker? How can you get hard information on historical weapon specifications unless you work for the right museum? Do you buy one from a commercial company and take their word that it is made from measurements? The data which museums publish on weapons unfortunately don't tend to include enough detail on weights and measurements to learn much about the weapons, from the viewpoint of someone who may want to either reproduce the weapons or study the style in which they were used.

At last here is some data on the subject. I was able in 1995 and 1996 to get in contact with a Professor James L. Jackson, who had been Dean of the English Department at George Mason and who wrote the book "Three Elizabethan Fencing Manuals" in 1972. This book was published by Scholars' Facsimiles & Reprints, Inc., P.O. Box 344, Delmar, New York 12054, (518) 439-5978, in hard cover on acid-free paper, and is now of course available on Amazon. It contains Elizabethan English translations of Saviolo and Di Grassi, as well as both of Silver's works, "Paradoxes of Defence" and "Bref Instructions". In the 1950s Dr. Jackson taught fencing at the Air Force Academy, where he had reproduction rapiers made and tried them in practices. He later combined this with his interest in Shakespeare to publish an article in Shakespeare Quarterly about the famous sword exchange in the Hamlet duel, arguing that it was based on a hilt grappling move shown in Saint Didier whose defense is trading swords between two fighters.

In 1979, Professor Jackson traveled to England, and was able to take measurements of a number of rapier blades made between 1590 and 1616, the Shakespearean period he was interested in, and around the height of the rapier era. These rapiers are normally displayed in the White Tower Museum in London. In addition to the usual length and weight, he measured balance points on the edge of a ruler, which is information almost never found in other sources. He was able to handle the weapons, and found that they were much lighter feeling and easier to use than his reproductions had been even though the historical blades were actually longer and heavier, because the period ones were better and more consistently balanced, as discussed below. For anyone who may want to use this data, I have summarized his measurements below and discussed some of the conclusions I could make.

The first column in the table, ID number, is the number assigned to the weapon by the White Tower museum. The next column has the total blade length from pommel end to tip, in inches. All lengths

**A Brief Discussion upon Rapiers (continued)****8.**

were measured to an accuracy of 1/16 ". Next is hilt length measured from the pommel end to the end of the swept hilt where the free rapier blade starts. Balance point is as a percent of total weapon length, measured from the hilt end, so 20% means 1/5 of the way out from the pommel towards the tip. Weight is total, in pounds, as measured to the nearest 1/2 ounce. Linear blade density is the last column, and this is a rough calculation of the weight of the blade per inch. This is the only value which requires much in the way of assumptions, so I have discussed the method for calculating it at the end. This is mainly useful if you decide you want a 45 inch rapier vs. a 39 inch one, and want to know how much it will add to the weight of the weapon. Remember that if you add to the blade weight, you also have to add some weight to the pommel to keep the balance point the same. You will need to add more than the extra blade weight because of leverage.

ID #	Total length	Hilt length	Balance (%)	Weight (lbs)	Blade density
9/24	42.69	6.25	21.67	2.94	0.0237
9/168	45.5	6.62	24.45	2.88	0.0252
9/75	59.31	7	21.29	2.38	0.0135
9/115	48	6.62	20.96	2.62	0.0181
9/789	52.75	6	22.51	3.12	0.0213
9/176	47.88	6.5	25.33	2.31	0.0201
9/107	41.88	5.75	23.88	2.06	0.0191
9/116	47.62	5.88	21.92	2.56	0.0188
9/784	43.62	5.75	23.64	2.12	0.0186
9/109	45.06	5.5	23.88	2.56	0.0216
9/111	53.56	6.25	20.30	2.94	0.0174
9/110	51.25	5.31	21.46	2.53	0.0168
ix-878	47	6.06	23.67	2.81	0.0229
ix-870	47.25	5.81	22.75	2.25	0.0174
None	55	7.12	22.27	2.78	0.0180
Average	48.625	6.162	22.67	2.592	0.0195

As rapier background and description, the first 12 of these weapons were just rapiers in a rack, with no specific history other than being of English make between about 1590 and 1610. Number ix-878 was German, with a heavy acorn-shaped pommel, a highly decorated blade, a simple swept hilt and a ricasso (section between the handle and the end of the swept hilt where you can put your fingers



A Brief Discussion upon Rapiers (continued)

8.

for control) but no clam shells. Professor Jackson made the comment "excellent balance" on his original record. Number ix-870 was Italian, with a long, narrow, lozenge shaped blade and a ricasso, also with "excellent balance". The final rapier with no ID number had just been found a few months earlier in the Thames, with a date of 1594 on the hilt, a long pommel, 1 3/4", two small clamshells, and a lozenge-shaped blade with the lowest 8 1/4" fluted, and was in near perfect condition.

Professor Jackson also collected some information on daggers. Two were made as matched sets to two of the weapons above, ID number x-255, matched to Italian ix-870 above, total length 18.06", hilt length 4.88", weight 0.78 lb, and ID number x-254, matched to German ix-878 above, total length 16.44", hilt length 5.38", weight slightly over 1 lb. Another German dagger, x-254, had a simple design, with a highly decorated blade and a side ring shaped like a raised bar. A final dagger had been pulled from the Thames with the unnumbered rapier, but may not have gone with it. It was dated to about 1590, and had a long, stiff tapering blade with a raised rib on each side. A side ring appeared on one side, and on the other the rib was flattened as though for ones thumb. It was a very stiff, strong dagger. He did not get balance points on any of these, so they are not in the table. If you have used daggers much, you will realize that balance point is not as important with these, since they are so short and light, but I've included basic information here for anyone who wants to get a reproduction dagger made.

Professor Jackson's comments about rapier cross sections were that some had diamond-shaped cross sections, and some had flattened triangular cross sections, that is to say half of a diamond. He did not record which weapons had which, but when plotting data I did not see two separate groupings, so I suspect that most weapon parameters were similar for the two. In phone discussions he said that all the weapons had very good balance, much better than his reproductions which had balance points near 31%. Compare this to the 22% or so in the table for the historical rapiers. Professor Jackson's reproduction rapiers were very well suited to thrusting techniques, but based on experimentation he felt that all of them would be too slow for cutting moves or parrying by moving the weapon tip; your opponent would skewer you while the tip was out of line.

I crunched some numbers and found out some interesting things about these rapiers. First, you can see in the table that there is very little difference in the balance point as listed in % blade length among the weapons, even though lengths vary by a foot and a half, and weights vary by more than a pound. The biggest variations in this group are only +/-2.5% with a standard deviation of +/-1.4%. This very tight spread includes not only the English blades but also the two blades made in different countries, Germany and Italy. Calculations show that you will get a change of 2.5% in the balance point from an addition or subtraction of just 0.86 oz spread out along the entire outer blade. Adding less than 3" of blade length without reweighting the hilt will cause a 2.5 % balance shift as well. All of these blade makers have converged on a very similar balance point for these weapons, which is not surprising given the decades of rapier development by 1590. Since people's lives depended on these, I argue that this balance point is very well optimized for use in combat of that era. Thought

**A Brief Discussion upon Rapiers (continued)****8.**

should be given to copying this balance point in rapiers we assemble, which of course can be carried out merely by adjusting pommel weights. For the more serious constructor of blades, trying to match the linear blade densities could be warranted. This would of course require closely working with whoever is forging the blades, and ultimately would call for more detailed measurements of cross sections of blades at multiple points along the lengths than Professor Jackson was able to make.

Several other points were interesting; weapons were longer, at an average of 48", than most of the ones I have seen in catalogues. Modern reproductions I have seen described average 37-39", almost 10" shorter than those discussed here, and shorter in fact than the smallest weapon in the table at 41.8".

I looked for a number of trends in plotted data for these weapons, first of all total weapon weight vs. total length; surprisingly, there was no trend for this. The longest weapons had, on average, similar weights to the shortest ones. Of course, a longer blade would be harder to swing saber-style in cutting moves because of a longer moment arm. Blade length vs. hilt length did not show a trend, so a longer weapon did not need a longer hilt to wield it. There was a slight trend towards balance points further out with blades having higher linear density, but it was small enough that it may be noise. It was interesting that the two "foreign" blades, German and Italian, fell right in with the groupings for all the other weapons, in no case were they at extremes.

In fact the only trend that definitely showed up was with Blade Density vs. Total Length, plotted below. While the data seems to be somewhat scattered, notice the expanded x and y scales to show the trend more clearly. Standard deviation, as discussed earlier, is low. It does seem that the longer the blade and total weapon, the lighter the blade per inch. This explains why weapons did not get heavier as they got longer, as discussed above. Professor Jackson supported this, saying that the longer blades got very thin. This certainly is good if you want to move it quickly; what we don't know is the effect it has on weapon strength and stiffness. What happens if you are fighting against a Scottish claymore (claidheamh mor, or great sword), such as in the movie Rob Roy? There we get into matters of metallurgy and skill in crafting the rapier, as well as skill in wielding it so that you do not try to block a heavy blade directly but rather to redirect its action and sidestep.

Figure 1. Plot of rapier blade density vs. total rapier length, showing that blade density decreases with length, consistent with approximately constant total weight for rapiers of various lengths and a thinner blade with increasing length.

To summarize the most interesting discoveries, longer rapiers were not heavier; rather, the blades got lighter per inch as they got longer to keep an roughly constant total weight. In addition, balance points were very consistent at around 22.7% from the pommel between different makers and three different countries. By this point in history, around 1600, rapier makers seem to have converged on this value as the best for survival of the wielder. Finally, these Elizabethan weapons are longer than



A Brief Discussion upon Rapiers (continued)

8.

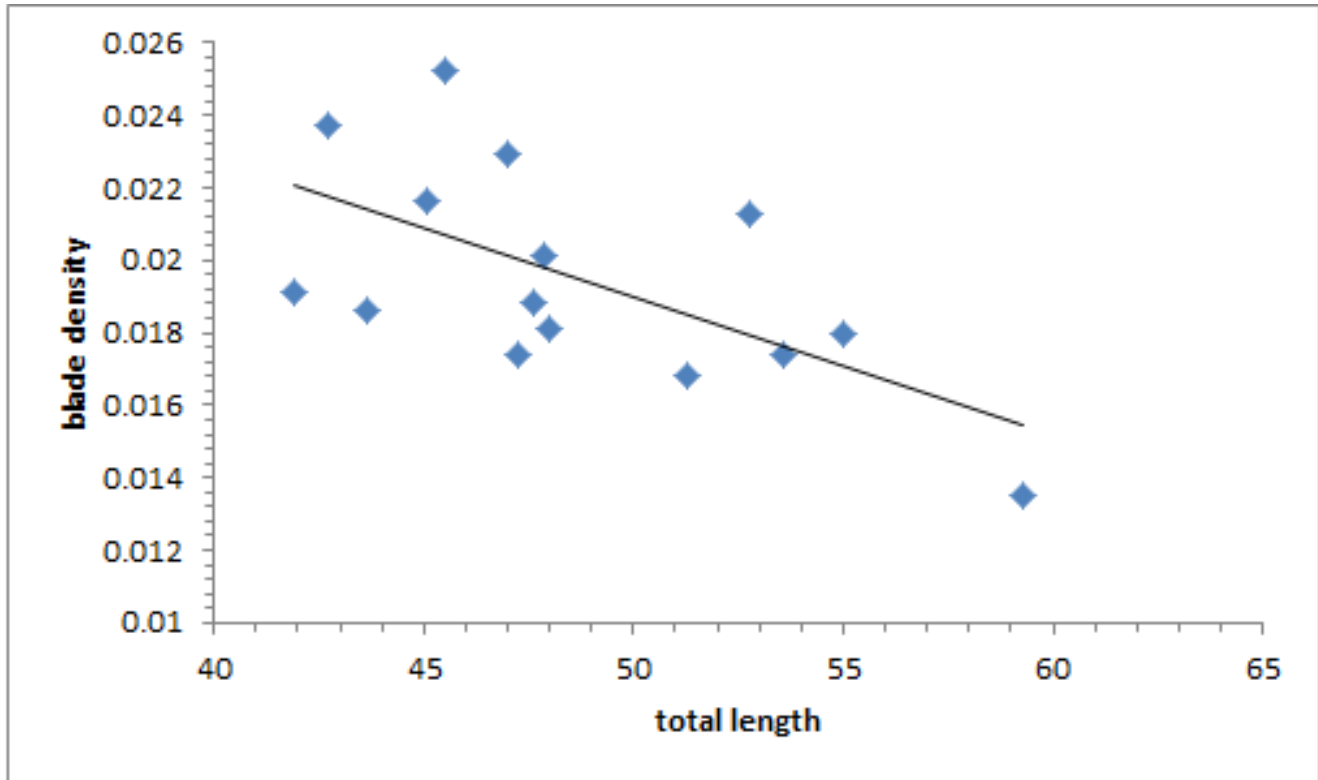


Figure 1. Plot of rapier blade density vs. total rapier length, showing that blade density decreases with length, consistent with approximately constant total weight for rapiers of various lengths and a thinner blade with increasing length.

most modern replica rapiers, by as much as a foot.

I also have one other caveat to add to this, since the original publication of this article I was able to visit the Victoria and Albert museum in London, where I spoke to the weapons curator and gave him a copy of the original paper. He told me that some caution needed to be used if one were trying to draw conclusions from weapons in museum curations, they had x-ray and documentary evidence that some rapiers in their collection were disassembled and reassembled using mixed parts by early Antiquarians, possibly Victorian, to try to “improve” them. Thus, one has to be careful measuring weapons which do not have a good provenance. Here we know, for example, that the last blade in the table, without an identifier, was “as found” in the Thames around 1979, and it fits nicely in with the rest of the data.

In conclusion, while shorter, less balanced weapons may be fine for the use most SCA folk put them to, as we are hopefully not using them on each other, I hope that the information here will help to move both buyers and makers of period reproduction rapiers towards an understanding of real



A Brief Discussion upon Rapiers (continued)

8.

blades, on which lives depended in many a duel.

Appendix:

For those who are interested in more mathematical details, linear blade density was estimated by balancing moments of inertia about the measured balance point. Half of the total weight is on either side of this point, so I assumed that on the blade side it was equally spread along the blade. While this is not perfect since the blade is not a uniform bar along its length, it gives a working value. On the hilt side weight was assumed to be concentrated towards the pommel, which is a heavy counterweight. Dr. Jackson noted that some pommels were larger than golf balls. In particular, the blade weight was assumed to lie at the halfway point between the balance point and the tip, while the hilt weight was assumed to lie 2/3 of the way towards the pommel. Solving the moment equations and the total weight equations simultaneously gives:

$$Fb = W / (1 + 4Lb / 3Lh)$$

where Fb is the blade force (weight), Lb is the length of the blade from the balance, Lh is the length of the hilt from the balance and W is the total weight of the weapon.

All these numbers can be calculated from the data in the table above. Note that if an assumption in the calculation of linear blade density is bad, it should cause a systematic error which could displace the plot shown vertically but which should not completely eliminate the trend seen.

In service to The Society, The East Kingdom, and Fencing,
Garrick Mapmaker

Order of the Golden Rapier, Order of the Silver Crescent

Mka Gregory Stauf, gregstauf@gmail.com

Submitted this March 11, 2015

See Also : "**A Statistical Analysis of Longsword Lengths**" on page 17

2.





Did You Know:

By Ursula of North Woods

The **East Kingdom Calendar**

<http://www.eastkingdom.org/EventListing.html>

- lists all official **events** and up to date information and registration details.

As an follow up to Garrick Mapmaker's article (page 12) on the weight and balance of rapier blades, these two articles explore the properties of longsword.

'One of the questions that frequently arises is:

"did longsword get longer in the 16th century"

The following articles from "Encased in Steel, The weekly blog for the Academy of Historical Arts" attempt to answer this question.

A Statistical Analysis of Longsword Lengths

<http://www.encasedinsteel.co.uk/2015/01/23/a-statistical-analysis-on-longsword-lengths/#more-2010>

A Perfect Length II: The Longsword

<http://www.encasedinsteel.co.uk/2011/07/29/a-perfect-length-ii-the-longsword/>

Society for Creative Anachronism **Newcomer's Portal:**

<http://welcome.sca.org/>

A **Newcomer's Guide** to the SCA:

<http://www.sca.org/officers/chatelain/pdf/NewcomersGuidePages-low.pdf>



Tuesday Night Fighting & Rapier Practice & A&S

The **heavy weapon practice** and **rapier practice** meets most Tuesday nights.

We will also be hosting an **Arts & Science (A&S) gathering** to work on various projects for the Swamp. **Dance practice** will occur on alternate Tuesdays. Or just come and watch, or bring a project of your own. All are welcome. There will be fencing and room for heavy weapons practice, if a marshal is available.

Contact [Orlando](#) with questions.

Location:

The Glen Gardner Youth Center
16 Hampton Rd
Glen Gardner, NJ, 08826

Time:

Tuesdays 7:30 pm to 9:30 pm

Suggested Donation:

\$7 per person

Note from our Senechale, Charis:

We will NOT be holding practice at the Glen Gardner Site for the next few weeks.

Charis expects the practice at Glen Gardner to reopen by the end of March.



Rapier Practice

Please be aware that we have **lost the site for the Thursday night rapier practice**. At this time, the only rapier practice available within Settmour Swamp is the Tuesday night practice in Glen Gardener. We are actively searching for a new location with which to host an additional practice. **Owynn Greenwood** owynn.greenwood@gmail.com

Note: all artwork, photos and creative articles are used with permission. Each item is marked with a number. The numbers refer to the list of contributors which is shown on the last page of this issue.



Nutley Heavey Weapons Fight Practice (photos by Liz Basedow)

The heavy weapon practice, Nutley, NJ.

Contact [Wulfgar](#) Silfrahaar with questions.

Location:

Franklin Reformed Church,
45 Hillside Crescent
Nutley, NJ 07110

Day/Time:

Wednesdays 7:30 pm to 10:30 pm

Suggested Donation:

\$5 per person



Waterloo Village

Note: all artwork, photos and creative articles are used with permission. Each item is marked with a number. The numbers refer to the list of contributors which is shown on the last page of this issue.



The Officers Of Settmour Swamp

Baron	Baron Erec L'Claire baron@settmourswamp.eastkingdom.org (908) 268-0725 (before 9pm)	Invested March 2013 Expires March 2017
Baroness	Baroness Jehannine de Flandres baroness@settmourswamp.eastkingdom.org (908) 319-0765	Invested March 2013 Expires March 2017
Seneschale	Lady Charis Accipiter charisacci@comcast.net (908) 850-8690 (No calls after 9pm)	Elected June 2014 Expires June 2016
Sinking Tower Pursivant	Lord Orlando Sforza herald@settmourswamp.eastkingdom.org	Elected October 2013 Expires October 2015
Knight Marshal	Baron Wulfar Silfrahaar (Silverbraid) marshal@settmourswamp.eastkingdom.org	Elected January 2014 Expires January 2016
Exchequer	Lord Miles Boweman exchequer@settmourswamp.eastkingdom.org	Elected October 2014 Expires October 2016
Chronicler	Baroness Ursula of North Woods chronicler@settmourswamp.eastkingdom.org	Elected March 2014 Expires March 2016
Chirurgeon	Lord Miles Boweman chirurgeon@settmourswamp.eastkingdom.org	Elected March 2013 Expires March 2015
Web Minister	Lord Dalek Bolotnikov webmaster@settmourswamp.eastkingdom.org	Renewed December 2014 Expires December 2016
Mistress of A&S	Mistress Caterina Giaocchini mas@settmourswamp.eastkingdom.org	Renewed December 2014 Expires December 2016
Mistress of The Lists (MoL)	Lady Ceara MacKieran mol@settmourswamp.eastkingdom.org	Elected March 2013 Expires March 2015
Chatelaine	Baron Don Malcolm Bowman chatelaine@settmourswamp.eastkingdom.org	Elected February 2013 Expires February 2015
Marshal of Fence	Lady Jehane de Fenwyk fencing@settmourswamp.eastkingdom.org	Renewed April 2014 Expires March 2016
Captain of Archers	Honorable Lord Thorlaeifr Hvitskegg archery@settmourswamp.eastkingdom.org (908) 406-0143 (No calls after 9pm)	Renewed November 2014 Expires November 2016
Chamberlain	Baroness Rhiannon de Carreg Cennen chamberlain@settmourswamp.eastkingdom.org	Renewed October 2013 Expires October 2015



The Officers Of Settmour Swamp (continued)

Youth Combat	Vacant	Vacant
Chancellors Minor	Vacant	Vacant (organize activities for children and teenagers)
Thrown Weapons	Vacant	Vacant
Canton of Gryphonwald (Middlesex Cty, NJ): Seneschal:	Failenn Finn gryphonwald@settmourswamp.eastkingdom.org	The Canton of Gryphonwald holds BGI (Black Gryphon Inn)
Canton of Marwick (Union County, NJ):	Baron Edmund Patterson	The Canton of Marwick is inactive



Waterloo Village



Combat	Date/Time	Location	Contact	Notes
Fighter Practice	Wednesdays 7:30 pm - 10:30 pm	Nutley, NJ. Franklin Reformed Church, 45 Hillside Crescent Nutley, NJ 07110	Wulfar Silfrahaar marshal@settmourswamp.eas tkingdom.org	Other fight practices: Fighter Practice group at Yahoo!Groups; suggested Donation \$5
Fighter Practice	Tuesday evenings 7:30 pm to 9:00 pm	Glen Gardner Youth Center 16 Hampton Rd Glen Gardner, NJ, 08826	Wulfar Silfrahaar marshal@settmourswamp.eas tkingdom.org	Also fencing and Arts& Science; suggested Donation \$7
Fencing Practice	Thursdays, 7:30 pm - 10:00 pm	Seeking new Site for Fencing Contact Owynn with suggestions	Owynn Greenwood owynn.greenwood@gmail.com 908-447-2979	suggested Donation \$5
Fencing Practice	Tuesday evenings 7:30 pm to 9:00 pm	Glen Gardner Youth Center 16 Hampton Rd Glen Gardner, NJ 08826	Orlando Sforza rapierdon@comcast.net (908) 850-8690 (No calls after 9pm)	Also heavy fighting and Arts& Science; suggested Donation \$7
Glen Gardner is NOT available in MARCH				
Archery Practice	Sundays 1:00 pm - 4:00 pm	Milford, NJ 310 Milford-Warren Glen Rd. (Rt. 519), Milford, NJ 08848 (908)995-4417	Jehannine de Flandres baroness@settmourswamp.ea stkingdom.org Phillip the Facetious	
Archery Practice is currently suspended and will resume next spring				
Thrown Weapons Practice	Sundays 1:00 pm - 4:00 pm	Milford, NJ 310 Milford-Warren Glen Rd. (Rt. 519), Milford, NJ 08848 (908)995-4417	Jehannine de Flandres baroness@settmourswamp.ea stkingdom.org Phillip the Facetious	Please email for directions.
Thrown Weapons Practice	First and Third Tuesdays of every month	Maplewood, NJ	James of York (contact via Merlinia) merliniajws@gmail.com (973) 762-2554	Please email for directions.



Art	Date/ Time	Location	Contact	Notes
Swamp Cats	Evenings TBD	Announced on the Yahoo email list	Rhiannon De Carreg Cennen chamberlain@settmourswamp.eastkingdom.org	Occasional Meetings to Share Art Projects
Dancing	Evenings 7:45 to 8pm	Glen Gardner , NJ (same location as fencing)	Ursula of North Woods chronicler@settmourswamp.eastkingdom.org	Every other week for 15 minutes—one dance taught each week
Archery Practice	Wednesday evenings May through October	Pittstown, NJ	Elizabeth Hawkwood hawkwoode@gmail.com	Occasional Practices Please email for directions.

An electronic listing of **activities and events** is available on the Barony website:

<http://settmourswamp.eastkingdom.org/events.html>

Courtesy copies are sent to:

chronicler@eastkingdom.org
historian@eastkingdom.org
king@eastkingdom.org
prince@eastkingdom.org
princess@eastkingdom.org
queen@eastkingdom.org
seneschal@eastkingdom.org
archivist@sca.org

Publication release forms:

<http://www.sca.org/docs/library.html>
<http://www.sca.org/docs/pdf/ReleaseFormsFAQsPRINT.pdf>

Links:

[The Barony Of Settmour Swamp](#)
[Settmour Swamp On Facebook](#)
[Settmour Rapier On Facebook](#)
[Canton of Gryphonwald](#)
[East Kingdom Website](#)
[SCA Membership](#)



SCA-required release forms must be signed for most submissions, including art, articles, recipes, poetry or maps. The Chronicler collects and stores the signed forms.

1.	Public Domain Clip Art is from http://www.openclipart.org/ "All Clipart on Openclipart are available for unlimited commercial use. That means you may use the clipart commercially, for education, for church, for school, for your job, or even to manufacture products globally."
2.	Photos , used with permission, Ursula of North Woods
3.	Chronicler Bear , used with permission, Merlinia of Rivenoak
4.	Photo Charis and Orlando , used with permission, Charis Accipiter
5.	Photo of Glen Gardner , used with permission, Jehannine de Flandres
6.	Photos Nutley Heavy Practice , used with permission, Elizabeth Basedow
7.	Photo of camels , used with permission, Peotr and Otgon
8.	A Brief Discussion upon Rapiers , used with permission, Garrick Mapmaker



1.

Local newsletter polices for the East Kingdom of the Society for Creative Anachronism. This includes obtaining releases from contributors for the inclusion of their works and contact information.

[EK Local Chronicler Policies](#)

MudPuppy Statement of Ownership

"This is the **March, 2015** issue of the **Mudpuppy**, a publication of the **Barony of Settmour Swamp** of the Society for Creative Anachronism, Inc. (SCA, Inc.).

The **Mudpuppy** is available from:

Sandra Unger,
36 Terry Drive, Morristown
New Jersey 07960

It is not a corporate publication of SCA, Inc., and does not delineate SCA, Inc. policies. Copyright © **2015** Society for Creative Anachronism, Inc.

For information on reprinting photographs, articles, or artwork from this publication, please contact the [Chronicler](#), who will assist you in contacting the original creator of the piece. Please respect the legal rights of our contributors.